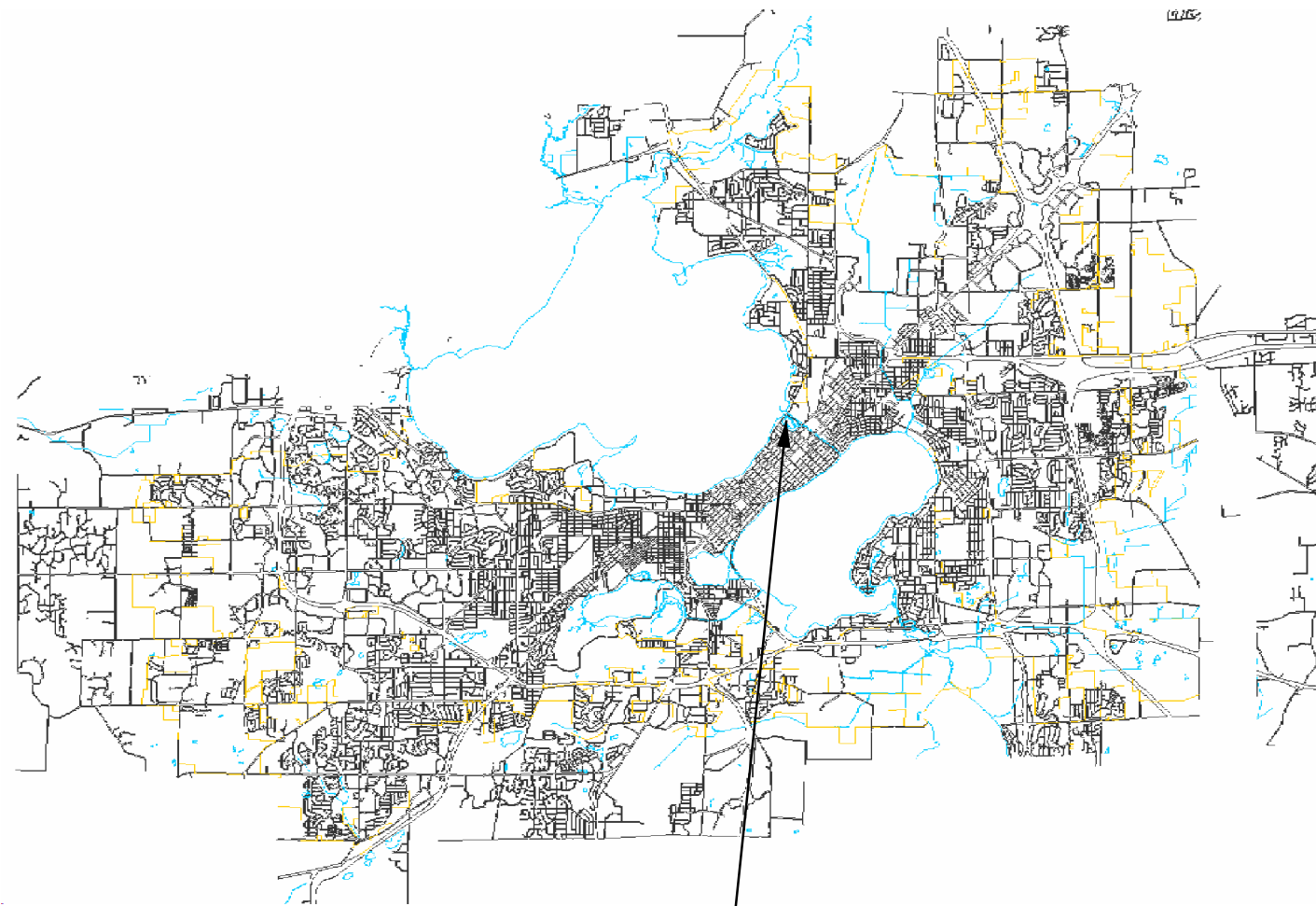


CONTRACT 7541 TENNEY PARK TREE PLANTINGS



TENNEY PARK
1414 E. JOHNSON ST
MADISON, WI 53703

City of Madison
Department of Public Works
PARKS DIVISION

City-County Building, Suite 104
210 Martin Luther King, Jr. Blvd.
PO Box 2987
Madison, WI 53701-2987

play
**MADISON
PARKS**



PROJECT:

*TENNEY PARK
TREE PLANTINGS*

*TENNEY PARK
1414 E. JOHNSON ST
MADISON, WI 53703*

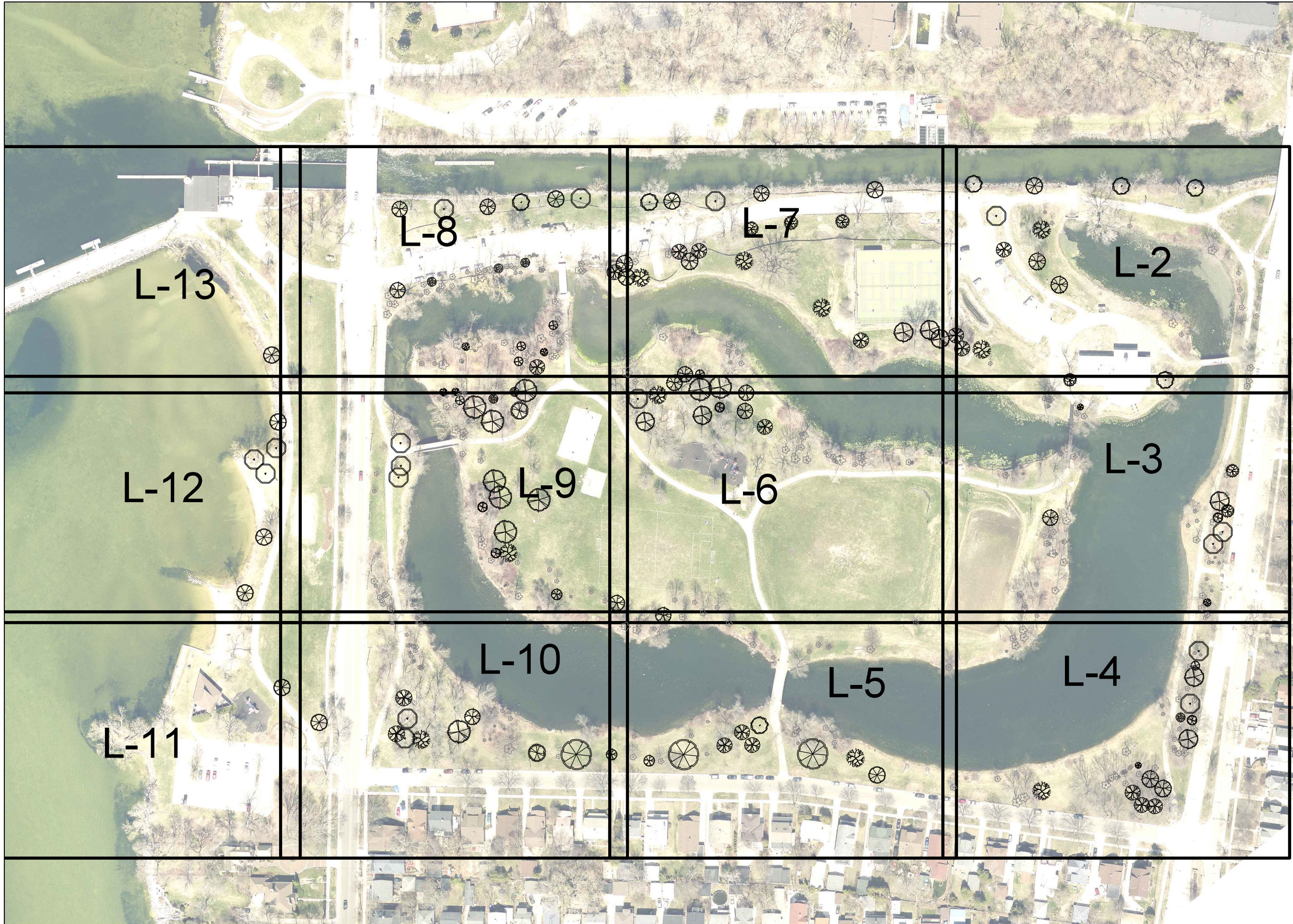
Although every effort has been made in preparing these plans and checking them for accuracy, the contractor and subcontractors must check all details and dimensions of their trade and be responsible for the same.

ITEM	DATE
Drawn by:	xx-xx-xxxx
Approved by:	xx-xx-xxxx

PUBLIC WORKS PROJECT #:
7541

SHEET TITLE:

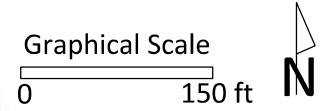
SHEET NUMBER:



City of Madison
 Department of Public Works
PARKS DIVISION

City-County Building, Suite 104
 210 Martin Luther King, Jr. Blvd.
 PO Box 2987
 Madison, WI 53701-2987

play
**MADISON
 PARKS**



PROJECT:

*TENNEY PARK
 TREE PLANTINGS*

*TENNEY PARK
 1414 E. JOHNSON ST
 MADISON, WI 53703*

Although every effort has been made in preparing these plans and checking them for accuracy, the contractor and subcontractors must check all details and dimensions of their trade and be responsible for the same.

ITEM	DATE
Drawn by:	xx-xx-xxxx
Approved by:	xx-xx-xxxx

PUBLIC WORKS PROJECT #:
7541

SHEET TITLE:
SHEET INDEX

SHEET NUMBER:
L-1

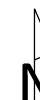
City of Madison
Department of Public Works
PARKS DIVISION

City-County Building, Suite 104
210 Martin Luther King, Jr. Blvd.
PO Box 2987
Madison, WI 53701-2987

play
**MADISON
PARKS**

Graphical Scale

0 40 ft



PROJECT:

*TENNEY PARK
TREE PLANTINGS*

*TENNEY PARK
1414 E. JOHNSON ST
MADISON, WI 53703*

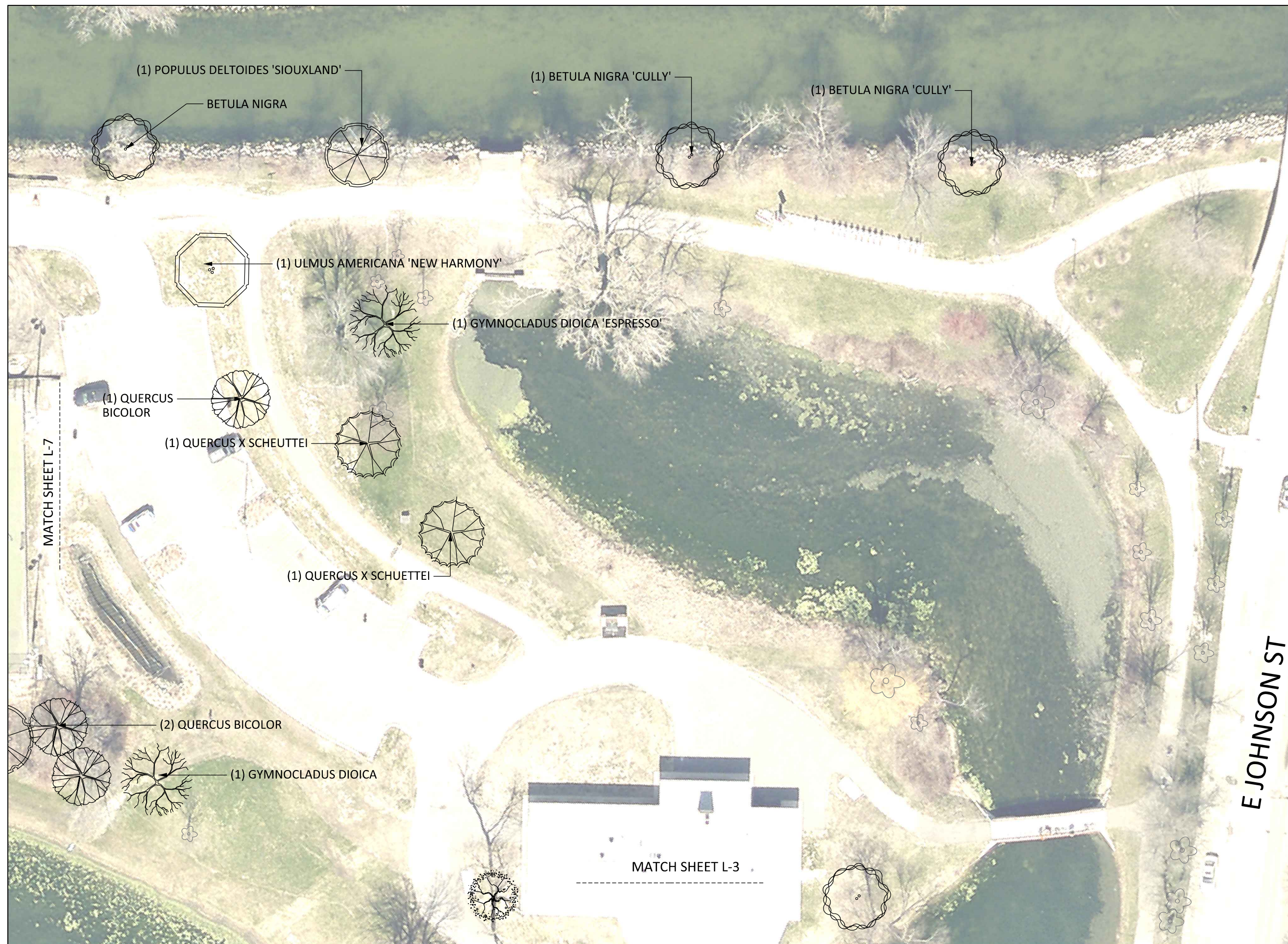
Although every effort has been made in preparing these plans and checking them for accuracy, the contractor and subcontractors must check all details and dimensions of their trade and be responsible for the same.

ITEM	DATE
Drawn by:	xx-xx-xxxx
Approved by:	xx-xx-xxxx

PUBLIC WORKS PROJECT #:
7541

SHEET TITLE:
LANDSCAPE PLAN

SHEET NUMBER:
L-2

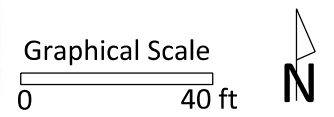




City of Madison
 Department of Public Works
PARKS DIVISION

City-County Building, Suite 104
 210 Martin Luther King, Jr. Blvd.
 PO Box 2987
 Madison, WI 53701-2987

play
**MADISON
 PARKS**



PROJECT:
*TENNEY PARK
 TREE PLANTINGS*

*TENNEY PARK
 1414 E. JOHNSON ST
 MADISON, WI 53703*

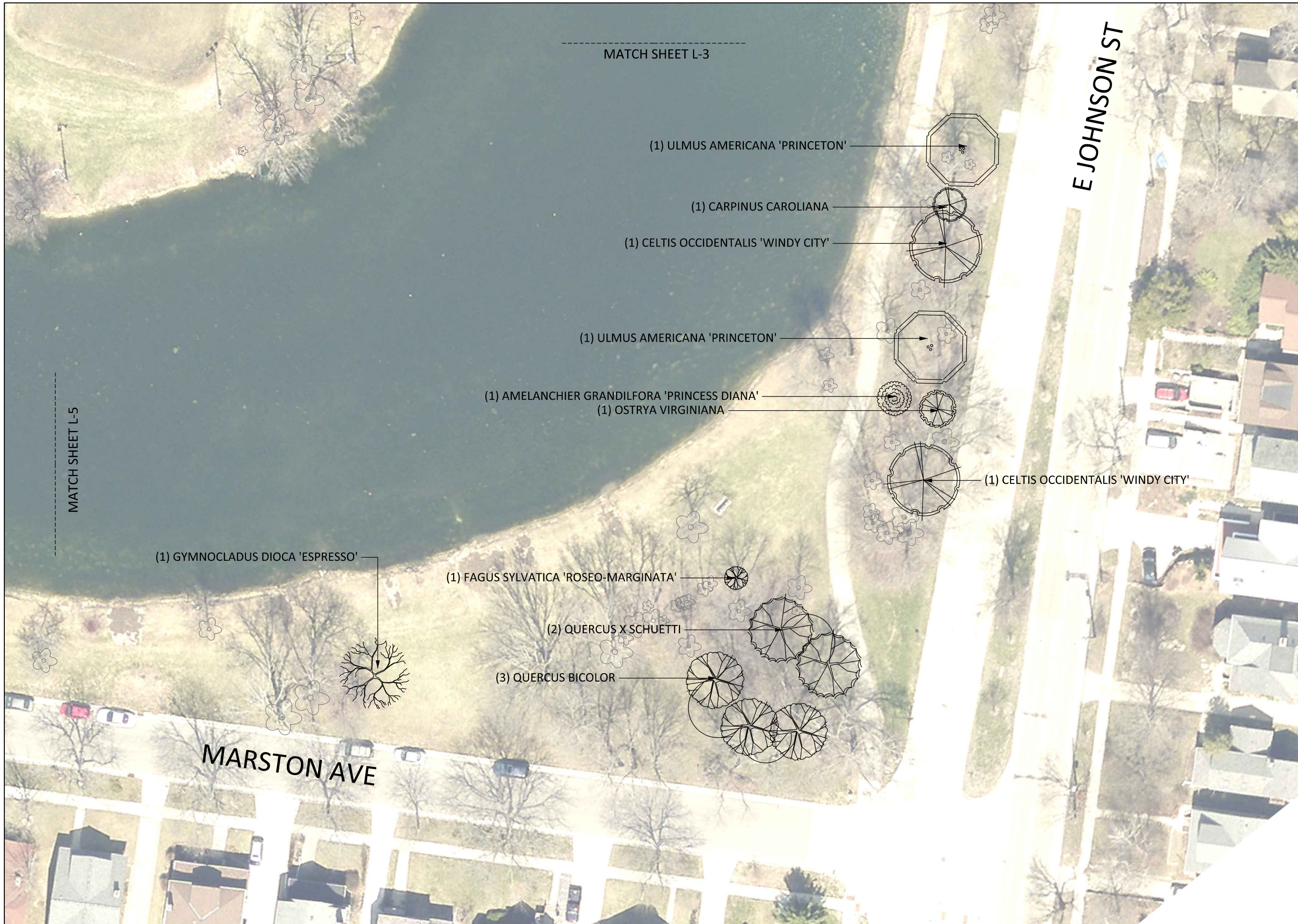
Although every effort has been made in preparing these plans and checking them for accuracy, the contractor and subcontractors must check all details and dimensions of their trade and be responsible for the same.

ITEM	DATE
Drawn by:	xx-xx-xxxx
Approved by:	xx-xx-xxxx

PUBLIC WORKS PROJECT #:
7541

SHEET TITLE:
LANDSCAPE PLAN

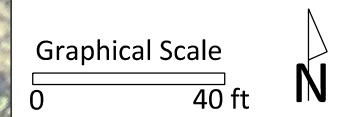
SHEET NUMBER:
L-3



City of Madison
 Department of Public Works
PARKS DIVISION

City-County Building, Suite 104
 210 Martin Luther King, Jr. Blvd.
 PO Box 2987
 Madison, WI 53701-2987

play
**MADISON
 PARKS**



PROJECT:

*TENNEY PARK
 TREE PLANTINGS*

*TENNEY PARK
 1414 E. JOHNSON ST
 MADISON, WI 53703*

Although every effort has been made in preparing these plans and checking them for accuracy, the contractor and subcontractors must check all details and dimensions of their trade and be responsible for the same.

ITEM	DATE
Drawn by:	xx-xx-xxxx
Approved by:	xx-xx-xxxx

PUBLIC WORKS PROJECT #:
7541

SHEET TITLE:
LANDSCAPE PLAN

SHEET NUMBER:
L-4



City of Madison
Department of Public Works
PARKS DIVISION

City-County Building, Suite 104
210 Martin Luther King, Jr. Blvd.
PO Box 2987
Madison, WI 53701-2987

play
**MADISON
PARKS**

Graphical Scale
0 40 ft

PROJECT:

*TENNEY PARK
TREE PLANTINGS*

*TENNEY PARK
1414 E. JOHNSON ST
MADISON, WI 53703*

Although every effort has been made in preparing these plans and checking them for accuracy, the contractor and subcontractors must check all details and dimensions of their trade and be responsible for the same.

ITEM	DATE
Drawn by:	xx-xx-xxxx
Approved by:	xx-xx-xxxx

PUBLIC WORKS PROJECT #:
7541

SHEET TITLE:
LANDSCAPE PLAN

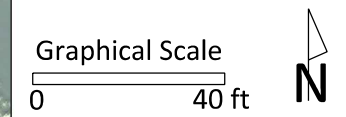
SHEET NUMBER:
L-5



City of Madison
 Department of Public Works
PARKS DIVISION

City-County Building, Suite 104
 210 Martin Luther King, Jr. Blvd.
 PO Box 2987
 Madison, WI 53701-2987

play
MADISON
PARKS



PROJECT:
TENNEY PARK
TREE PLANTINGS

TENNEY PARK
1414 E. JOHNSON ST
MADISON, WI 53703

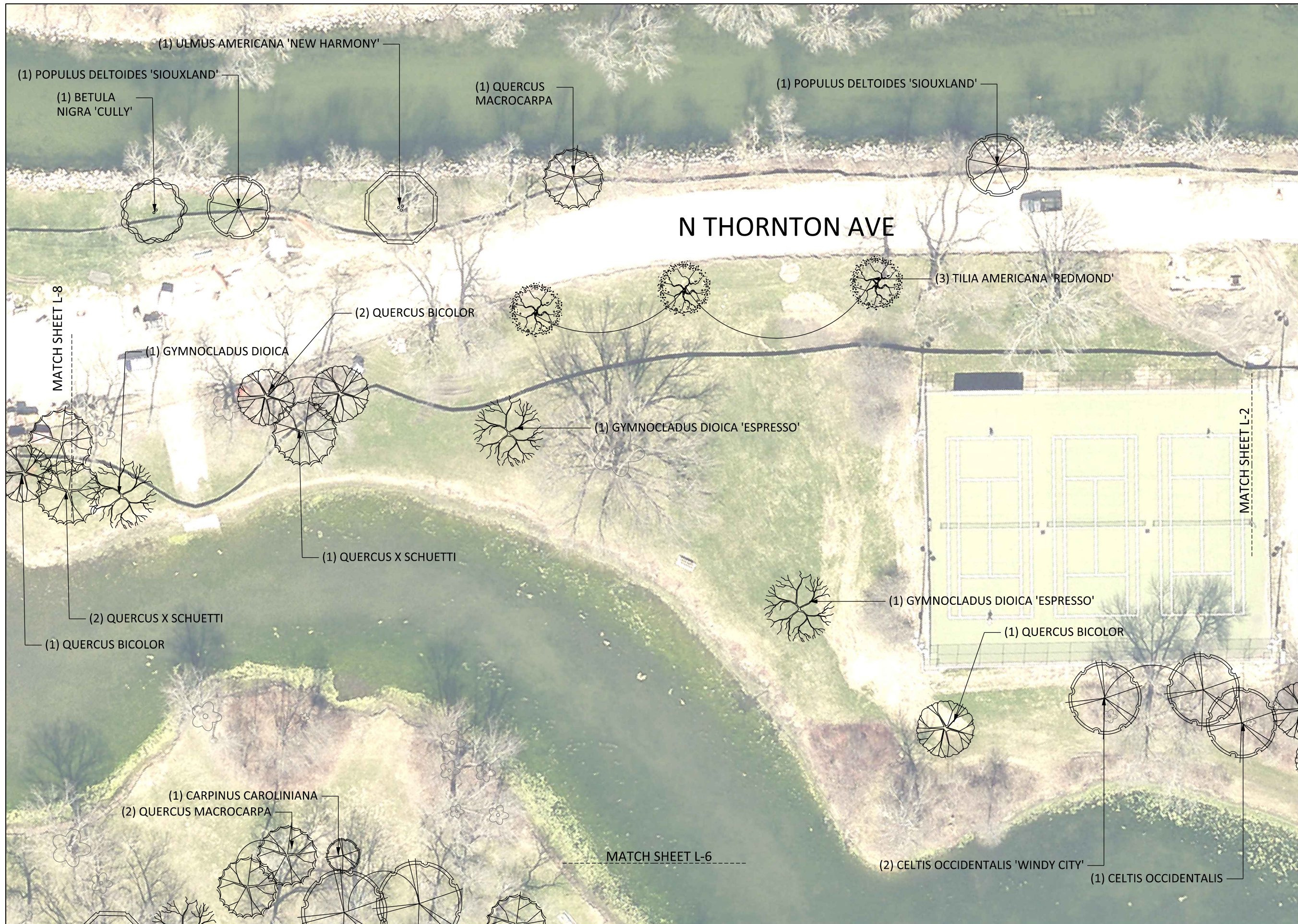
Although every effort has been made in preparing these plans and checking them for accuracy, the contractor and subcontractors must check all details and dimensions of their trade and be responsible for the same.

ITEM	DATE
Drawn by:	xx-xx-xxxx
Approved by:	xx-xx-xxxx

PUBLIC WORKS PROJECT #:
7541

SHEET TITLE:
LANDSCAPE PLAN

SHEET NUMBER:
L-6



City of Madison
 Department of Public Works
PARKS DIVISION

City-County Building, Suite 104
 210 Martin Luther King, Jr. Blvd.
 PO Box 2987
 Madison, WI 53701-2987

play
**MADISON
 PARKS**

Graphical Scale
 0 40 ft **N**

PROJECT:
**TENNEY PARK
 TREE PLANTINGS**

**TENNEY PARK
 1414 E. JOHNSON ST
 MADISON, WI 53703**

Although every effort has been made in preparing these plans and checking them for accuracy, the contractor and subcontractors must check all details and dimensions of their trade and be responsible for the same.

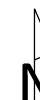
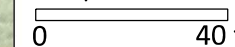
ITEM	DATE
Drawn by:	xx-xx-xxxx
Approved by:	xx-xx-xxxx

PUBLIC WORKS PROJECT #:
7541

SHEET TITLE:
LANDSCAPE PLAN

SHEET NUMBER:
L-7

Graphical Scale



PROJECT:

**TENNEY PARK
TREE PLANTINGS**

**TENNEY PARK
1414 E. JOHNSON ST
MADISON, WI 53703**

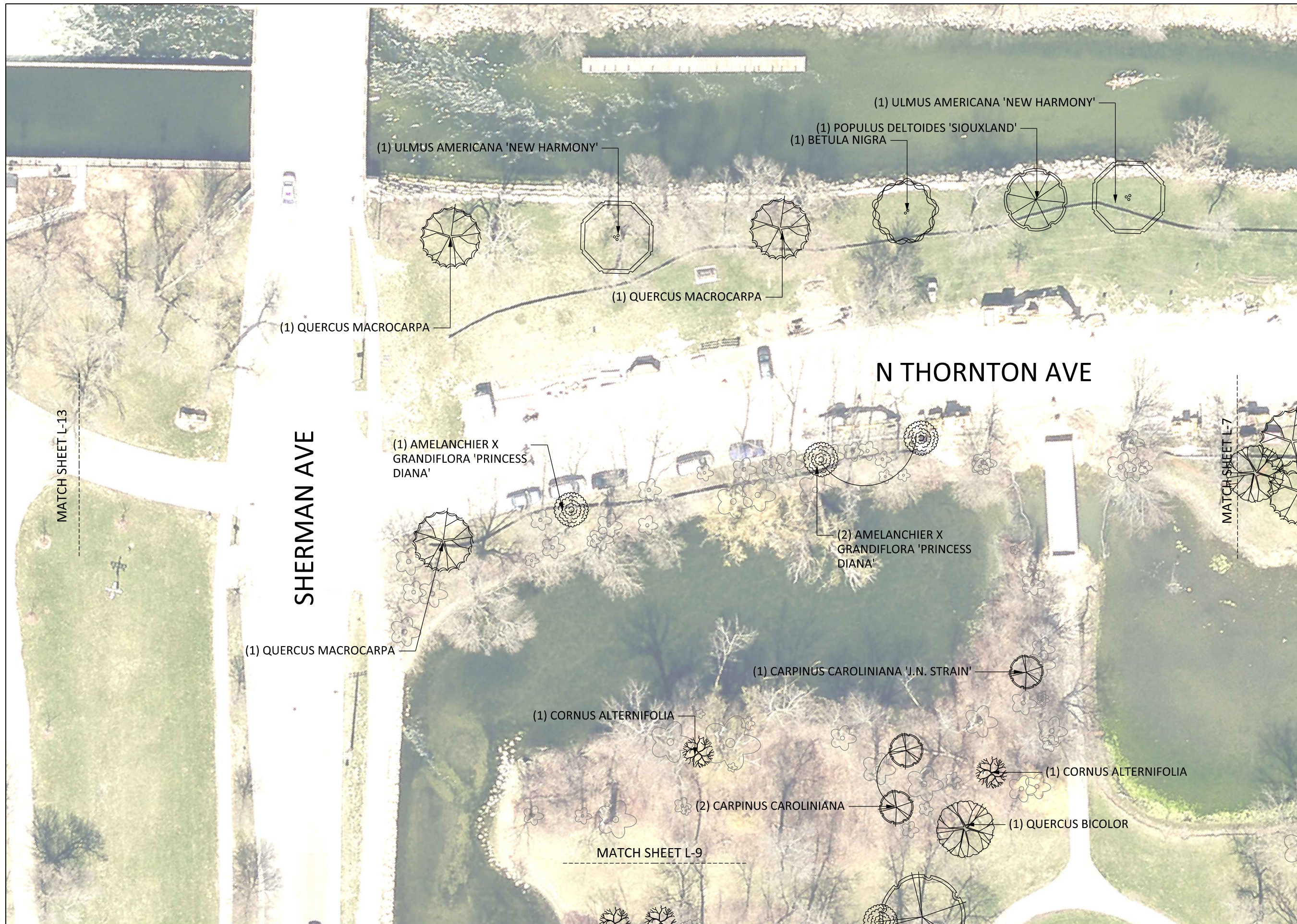
Although every effort has been made in preparing these plans and checking them for accuracy, the contractor and subcontractors must check all details and dimensions of their trade and be responsible for the same.

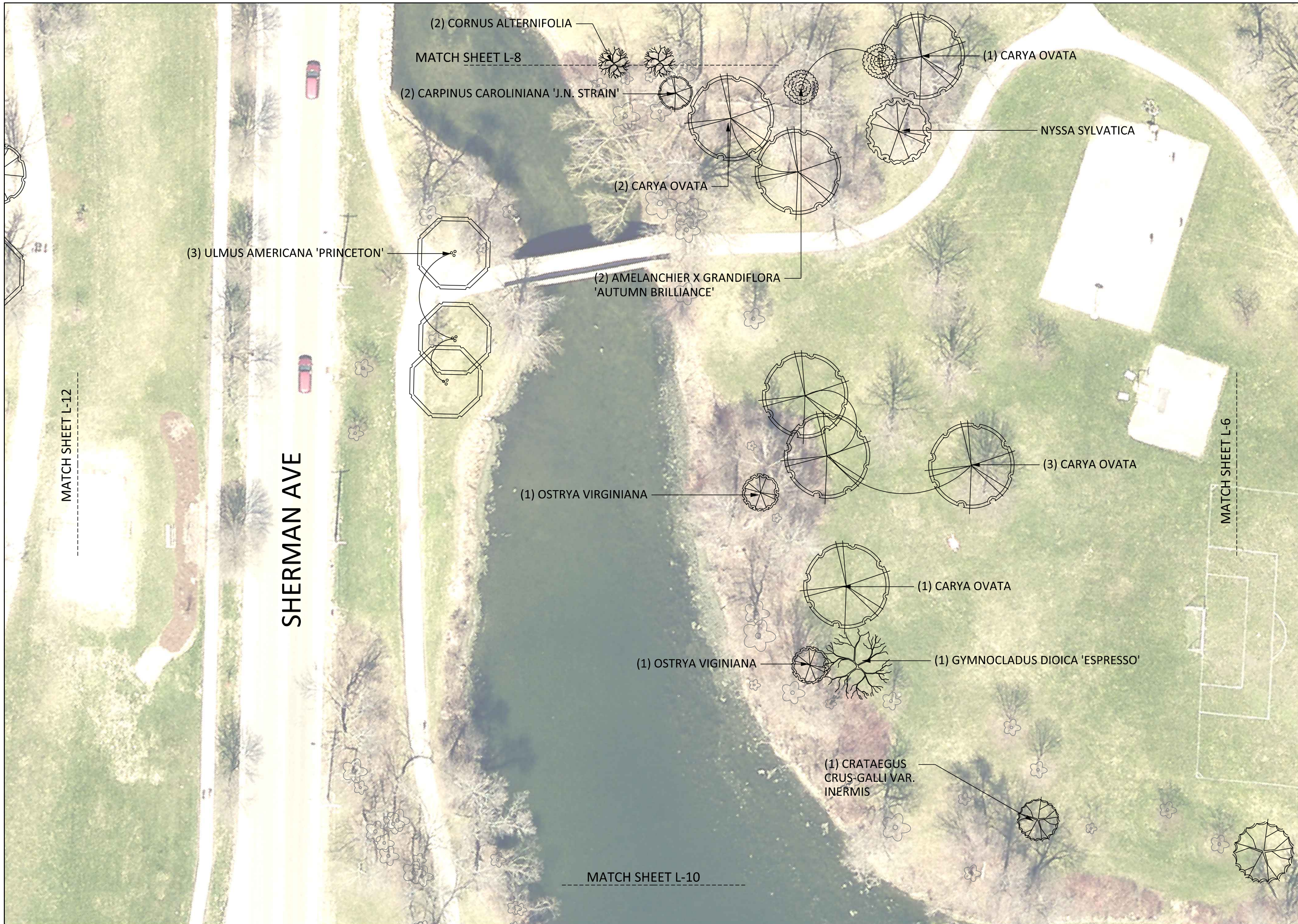
ITEM	DATE
Drawn by:	xx-xx-xxxx
Approved by:	xx-xx-xxxx

7541
7541

SHEET TITLE:
LANDSCAPE PLAN

SHEET NUMBER:
L-8

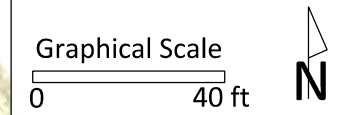




City of Madison
 Department of Public Works
PARKS DIVISION

City-County Building, Suite 104
 210 Martin Luther King, Jr. Blvd.
 PO Box 2987
 Madison, WI 53701-2987

play
**MADISON
 PARKS**



PROJECT:
**TENNEY PARK
 TREE PLANTINGS**

**TENNEY PARK
 1414 E. JOHNSON ST
 MADISON, WI 53703**

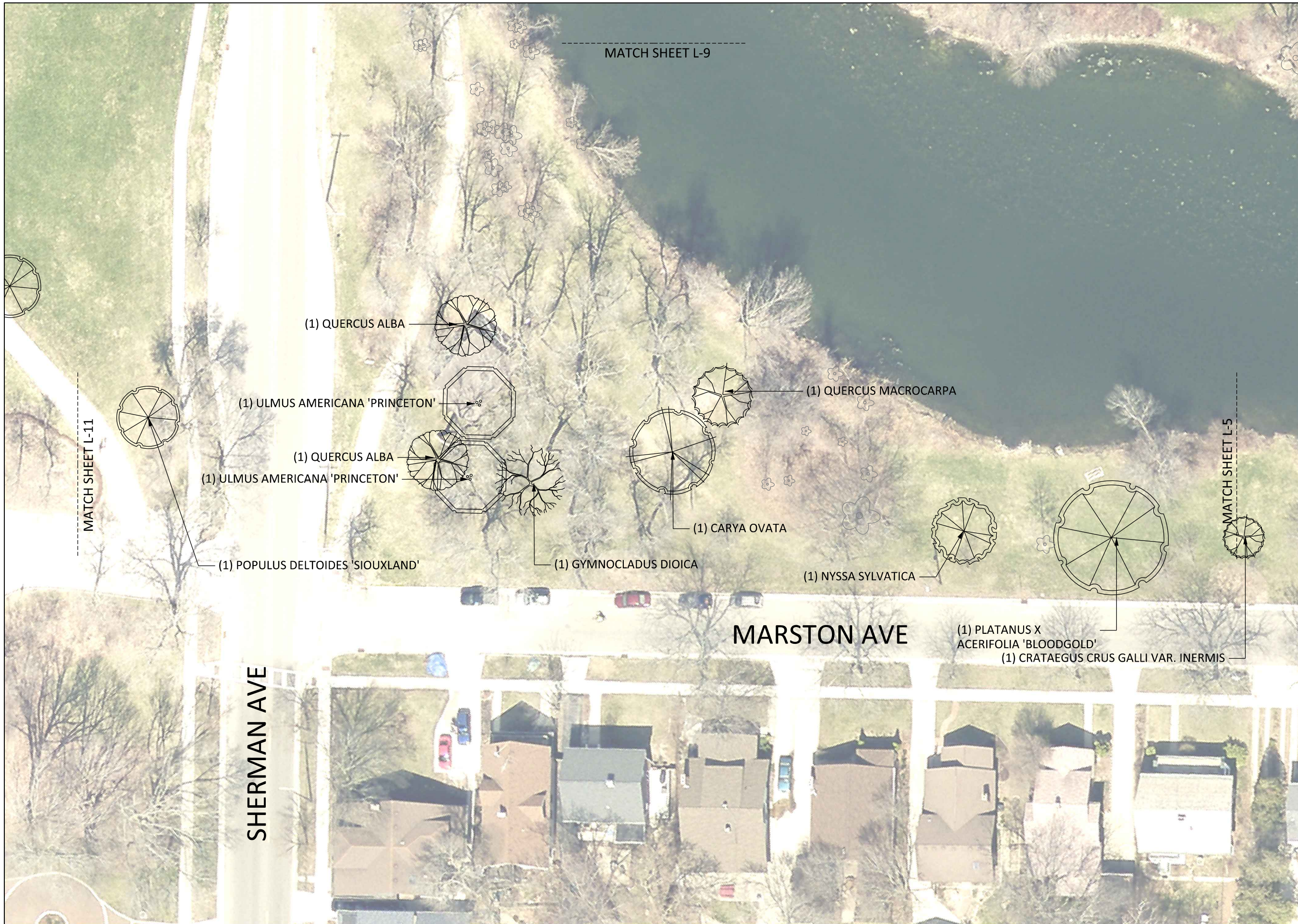
Although every effort has been made in preparing these plans and checking them for accuracy, the contractor and subcontractors must check all details and dimensions of their trade and be responsible for the same.

ITEM	DATE
Drawn by:	xx-xx-xxxx
Approved by:	xx-xx-xxxx

PUBLIC WORKS PROJECT #:
7541

SHEET TITLE:
LANDSCAPE PLAN

SHEET NUMBER:
L-9



City of Madison
 Department of Public Works
PARKS DIVISION

City-County Building, Suite 104
 210 Martin Luther King, Jr. Blvd.
 PO Box 2987
 Madison, WI 53701-2987

play
**MADISON
 PARKS**

Graphical Scale

0 40 ft



PROJECT:

*TENNEY PARK
 TREE PLANTINGS*

*TENNEY PARK
 1414 E. JOHNSON ST
 MADISON, WI 53703*

Although every effort has been made in preparing these plans and checking them for accuracy, the contractor and subcontractors must check all details and dimensions of their trade and be responsible for the same.

ITEM	DATE
Drawn by:	xx-xx-xxxx
Approved by:	xx-xx-xxxx

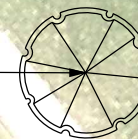
PUBLIC WORKS PROJECT #:
7541

SHEET TITLE:
LANDSCAPE PLAN

SHEET NUMBER:
L-10

MATCH SHEET L-11

(1) POPULUS DELTOIDES 'SIOUXLAND'



MATCH SHEET L-10

City of Madison
Department of Public Works
PARKS DIVISION

City-County Building, Suite 104
210 Martin Luther King, Jr. Blvd.
PO Box 2987
Madison, WI 53701-2987

play
**MADISON
PARKS**

Graphical Scale
0 40 ft



PROJECT:

*TENNEY PARK
TREE PLANTINGS*

*TENNEY PARK
1414 E. JOHNSON ST
MADISON, WI 53703*

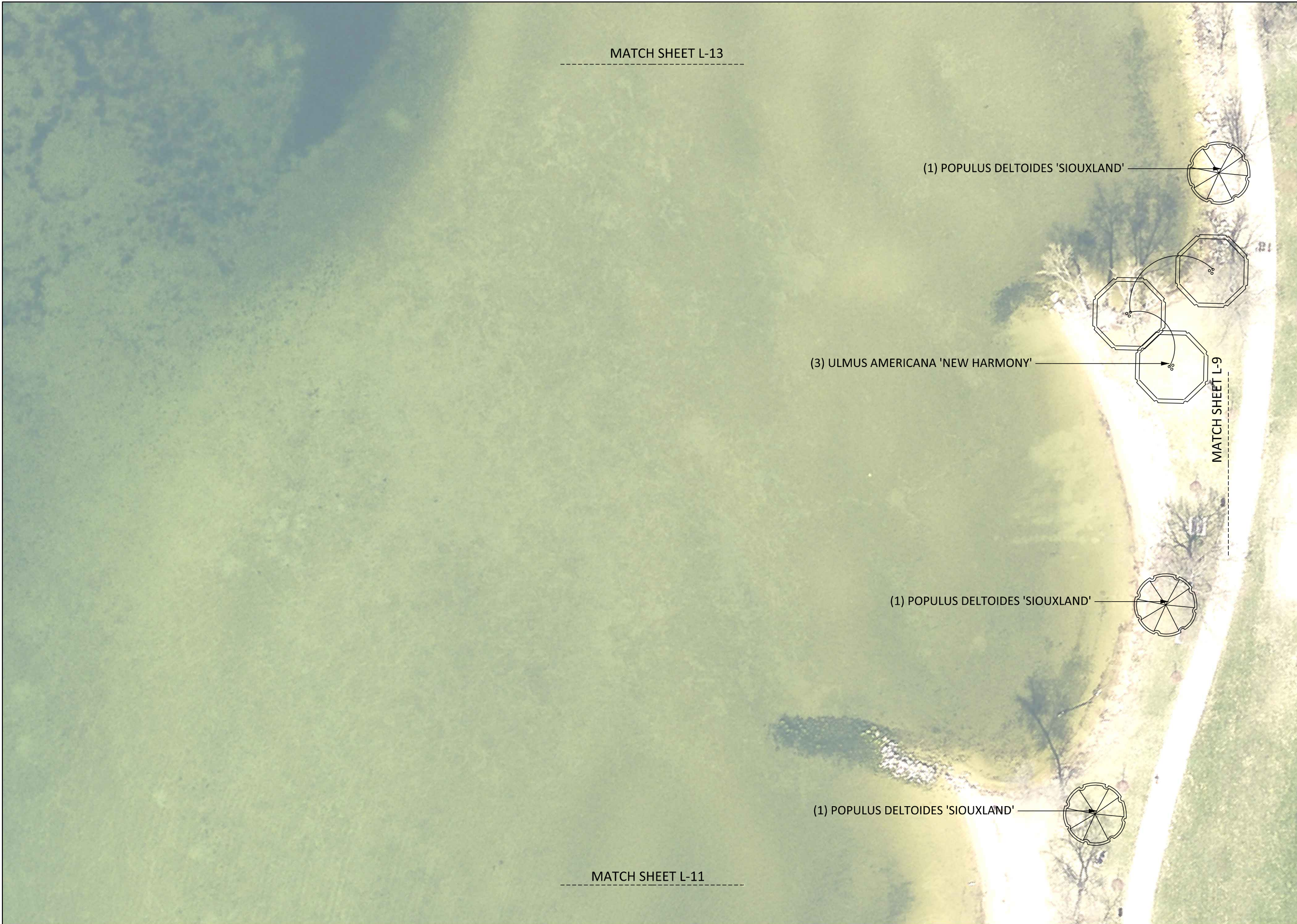
Although every effort has been made in preparing these plans and checking them for accuracy, the contractor and subcontractors must check all details and dimensions of their trade and be responsible for the same.

ITEM	DATE
Drawn by:	xx-xx-xxxx
Approved by:	xx-xx-xxxx

PUBLIC WORKS PROJECT #:
7541

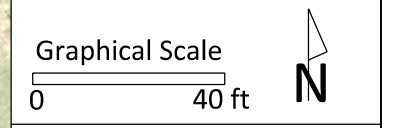
SHEET TITLE:
LANDSCAPE PLAN

SHEET NUMBER:
L-11



City of Madison
 Department of Public Works
PARKS DIVISION

City-County Building, Suite 104
 210 Martin Luther King, Jr. Blvd.
 PO Box 2987
 Madison, WI 53701-2987



PROJECT:
*TENNEY PARK
 TREE PLANTINGS*

*TENNEY PARK
 1414 E. JOHNSON ST
 MADISON, WI 53703*

Although every effort has been made in preparing these plans and checking them for accuracy, the contractor and subcontractors must check all details and dimensions of their trade and be responsible for the same.

ITEM	DATE
Drawn by:	xx-xx-xxxx
Approved by:	xx-xx-xxxx

PUBLIC WORKS PROJECT #:
7541

SHEET TITLE:
LANDSCAPE PLAN

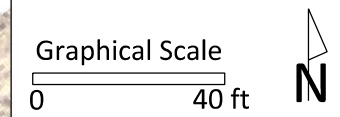
SHEET NUMBER:
L-12



City of Madison
 Department of Public Works
PARKS DIVISION

City-County Building, Suite 104
 210 Martin Luther King, Jr. Blvd.
 PO Box 2987
 Madison, WI 53701-2987

play
**MADISON
 PARKS**



PROJECT:
*TENNEY PARK
 TREE PLANTINGS*

*TENNEY PARK
 1414 E. JOHNSON ST
 MADISON, WI 53703*

Although every effort has been made in preparing these plans and checking them for accuracy, the contractor and subcontractors must check all details and dimensions of their trade and be responsible for the same.

ITEM	DATE
Drawn by:	xx-xx-xxxx
Approved by:	xx-xx-xxxx

PUBLIC WORKS PROJECT #:
7541

SHEET TITLE:
LANDSCAPE PLAN

SHEET NUMBER:
L-13

MATCH SHEET L-8

(1) POPULUS DELTOIDES 'SIOUXLAND'



MATCH SHEET L-12